

**AUTHORS INSTRUCTIONS FOR PREPARATION OF THE FULL PAPER FOR  
THE PROCEEDINGS OF THE INTERNATIONAL CONFERENCE ON  
“RADIO SCIENCES” (ICRS-2008)**

**Principal Author Name (1), Co-Author Name (2), Co-Author Name (3)**  
*(1)Affiliation of first author (to be prime contact) followed by complete mailing address  
and Email*

**PAPER PREPARATION (UNDERLYING HARDCOPY)**

Each paper is limited to a maximum of 6 (six) pages two columns. The title and Affiliations should be in single column.

Format: Use A4 size paper, as below

Table 1. Recommended margins for the paper  
Paper format: A4

Unit: Inch cm inch cm

Margin LEFT 1.25’’

Margin RIGHT 1.25’’

Margin TOP 1’’

Margin BOTTOM 1’’

Text: The text shall be organised in a double column, left and right justified. Use single spacing in the body of the text and double spacing between sections. The spacing between two columns should be 0.3’’.

Font: Text: Times New Roman

Variable: Times New Roman italic

Symbol: True Type Symbol font

Size: Paper title: 14 pt bold (TITLE)

Author(s): 13 pt bold (Author)

Affiliation(s): 12 pt bold italic (Affiliation)

Normal text: 12 pt (regular text)

Text in tables:10 pt (text)

Symbols: 12 pt ( f)

Sub/super-script: 7 pt (x y)

Headings: Chapter headings should be center aligned, double-spaced (one blank line before and after the heading) and printed in bold “ALL CAPS”. Sub-headings should be left aligned and double-spaced in bold text with the main words capitalised (“Title Case”). Sub-sub-heads are left aligned in italic font with the main words capitalised (“Title Case”).

### Title and Author Affiliation

The paper title, author(s) name(s), affiliation, complete mailing address and email should be centred at the top of the first page using the font as indicated above. If there are several authors, the complete affiliation should be given for each of them using superscript (1) in the authors (2) list (3) to refer to them.

### Equations

Equations should be centered and numbered consecutively with equation numbers in parentheses flush with the right margin. Italicise Roman and Greek symbols for quantities and variables. Use a long dash rather than a hyphen for a minus sign. Use parenthesis to avoid ambiguities in denominators. Punctuate equations with commas or periods when they are part of a sentence. Be sure that the symbols in your equation have been defined before the equation appears or immediately following. Use “(1)” not “Eq. (1)” nor “equation (1)” except at the beginning of a sentence, then use “Equation (1) is...”. An example for an equation is:

$$T_v = \frac{T_b}{1 + (\Delta T_b / \alpha) \ln \epsilon} \quad (1)$$

### Figures and Tables

Position figures and tables at the top and bottom of pages. Figure captions should be below the figures; table captions should be above the tables. Avoid placing figures and tables before they are first mentioned in the text. Use the abbreviation “Fig.1,” even at the beginning of a sentence. All images must be embedded into your document. The type of graphics you include will affect the quality and size of your electronic paper. An example for an image embedded in the document is given in Fig.1

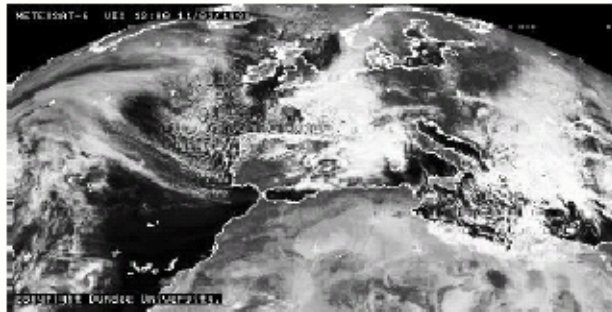


Fig. 1. Meteosat Visible channel showing clouds over Europe

### REFERENCES

Number citations consecutively in square brackets [1]. The sentence punctuation follows the brackets [2]. Refer simply to the reference number, as in [3]. Do not use “Ref.[3] or “reference [3]” except at the beginning of a sentence: “Reference [3] was the first....” The title of the book or the name of the journal shall be typed in italic.

Give all authors’ names; do not use “et al” unless there are six authors or more. Papers that have not been published, even if they have been submitted for publication, should be cited as “unpublished” [4]. Papers that have been accepted for publication should be

cited as “in press” [5]. For papers published in translation journals, please give the English citation first, followed by the original foreign-language citation [6].

### **Sample References**

[1] G. Eason, B. Noble, and I.N. Sneddon, “On certain integrals of Lipschitz -Hankel type involving products of Bessel functions,” *Phil. Trans. Roy. Soc. London*, vol. A247, pp. 529-551, April 1955.

[2] J. Clerk Maxwell, *A Treatise on Electricity and Magnetism*, 3rd ed., vol. 2. Oxford: Clarendon, pp. 68-73, 1892.

[3] I.S. Jacobs and C.P. Bean, “Fine Particles, Thin Films and Exchange Anisotropy,” in *Magnetism*, vol. III. G.T.

Radio and H. Suhl, Eds. New York: Academic, pp. 271-350, 1963.

[4] K. Elissa, “Title of paper,” unpublished.

[5] R. Nicole, “Title of paper,” in press.

[6] Y. Yorozu, M. Hirano, K. Oka, and Y. Tagawa, “Electron spectroscopy studies on magneto-optical media and plastic substrate interface,” *IEEE Transl. J. Magn. Japan*, vol. 2, pp. 740-741, August 1987.